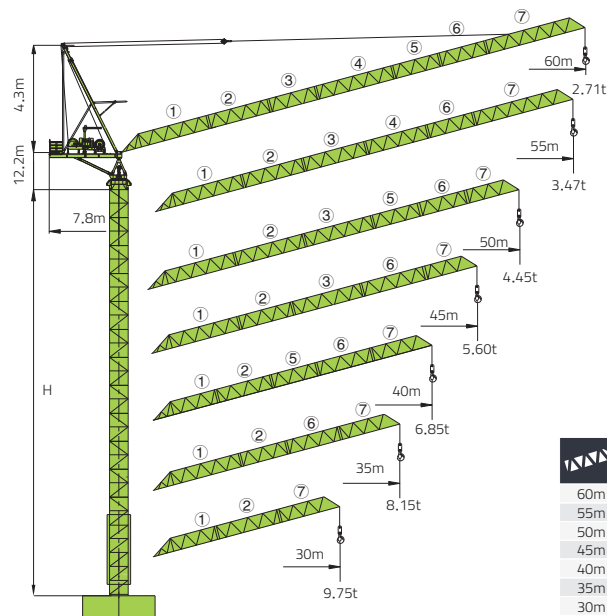


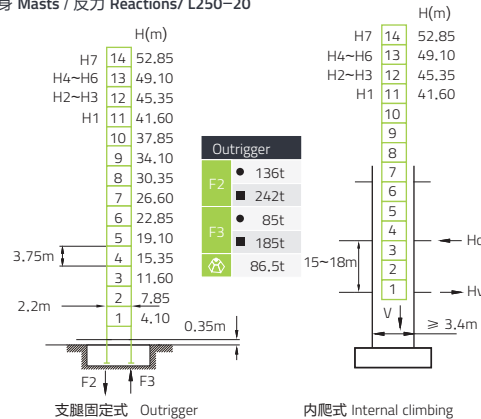
L250-20



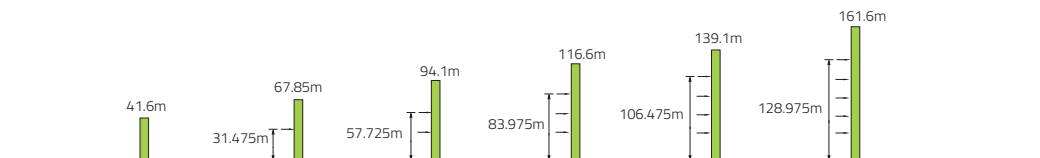
		H	(kg)	PHZ2000	PHZ3000	PHZ4000	PHZ5500
60m	7.8m	H1	25500	1	2	3	1
55m	7.8m	H2	23500	0	2	3	1
50m	7.8m	H3	23500	0	2	3	1
45m	7.8m	H4	22500	1	1	3	1
40m	7.8m	H5	21500	1	2	2	1
35m	7.8m	H6	19500	1	0	3	1
30m	7.8m	H7	17500	0	0	3	1

Final product specification shall be in accordance with purchase order or sales contract only

塔身 Masts / 反力 Reactions/ L250-20



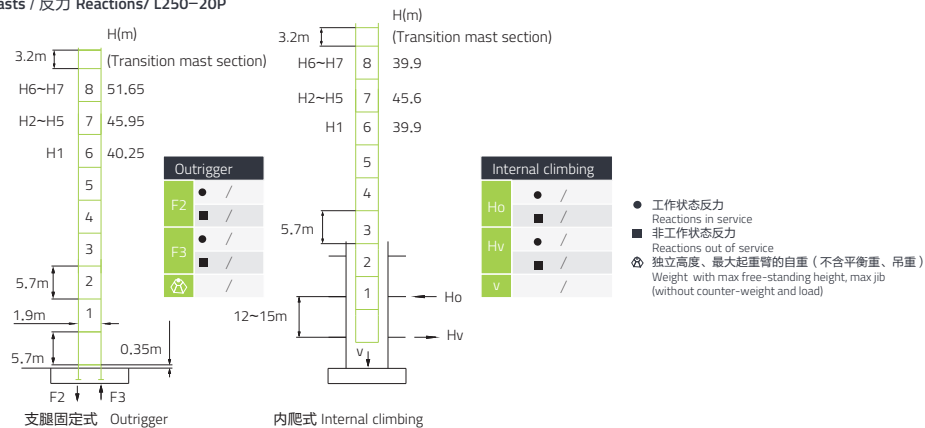
附着 Anchorages/ L250-20



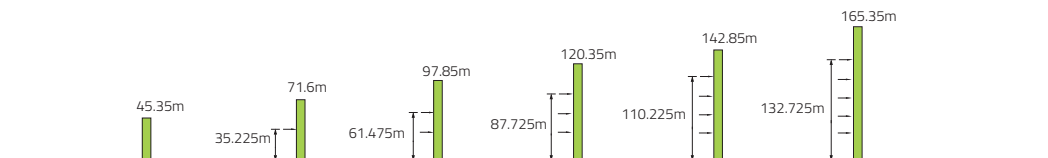
- 工作状态反力
Reactions in service
- 非工作状态反力
Reactions out of service
- ⊗ 独立高度、最大起重臂的自重 (不含平衡重、吊重)
Weight with max free-standing height, max jib
(without counter-weight and load)

L250-20

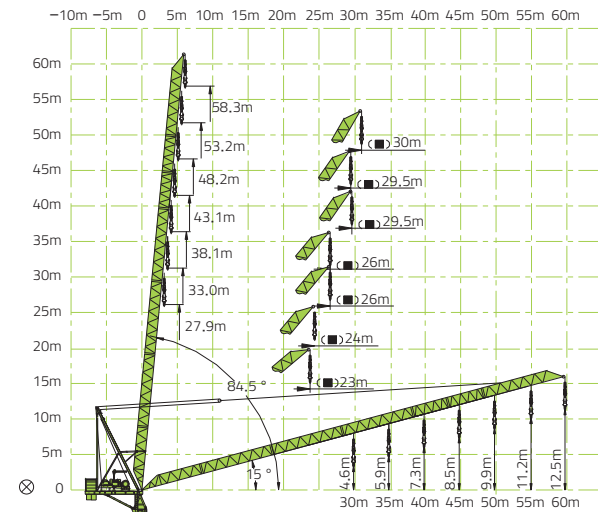
塔身 Masts / 反力 Reactions/ L250-20P



附着 Anchorages/ L250-20P










起重臂 Luffing Jib








■ 非工作状态最小幅度 Minimum radius out of service
 ⊗ 臂根铰点 Hinge point at jib root

L250-20

起重特性 Load Diagram

		Max Capacity m/t	15.0	20.0	25.0	30.0	35.0	40.0	45.0	50.0	55.0	60.0
60		6.2~25.9/10.00	10.00		8.29	6.72	5.52	4.57	3.81	3.20	2.71	
55		5.8~27.2/10.00	10.00		8.81	7.14	5.87	4.88	4.09	3.47		
50		5.4~28.0/10.00	10.00		9.18	7.49	6.21	5.22	4.45			
		5.1~13.9/20.00	19.08	14.10	10.91	8.72	7.11	5.89	4.97	4.32		
45		4.6~28.7/10.00	10.00		9.49	7.79	6.55	5.60				
		4.5~14.1/20.00	19.33	14.43	11.32	9.20	7.53	6.29	5.40			
40		4.5~28.9/10.00	10.00		9.60	8.01	6.85					
		4.2~14.6/20.00	19.85	14.81	11.63	9.45	7.89	6.78				
35		4.3~28.8/10.00	10.00		9.58	8.15						
		4.1~15.2/20.00	20.00	15.15	11.86	9.63	8.10					
30		3.6~29.3/10.00	10.00		9.75							
		3.3~16.0/20.00	20.00	15.46	11.88	9.55						

传动机构 Mechanisms

配置 configuration			III			IV			KW	
			III	IV	V	III	IV	V		
 起升 Hoisting	QPL20100A	m/min	0~40	8~80	0~100	0~20	0~40	0~50	75	710m Φ (6 layers)
		t	10	5	2.5	20	10	5		
 回转 Slewing	HPW75F1.130C HPW75F2.130C	r/min	0~0.61						2x145 N.m	①超出咨 询我们 Consult us if overtop
 变幅 Luffing	BPL450	min	2.2 (15°~85°)						45	
	380V(\pm 10%)50Hz	135kW								

250t/m